

“എന്തൊരു
പുതുപുത്തൻ
പൂക്കൾഭവമെ”

SPC
FLOWERS[®]
PAINTS

KERALA'S NO.1 PAINT MANUFACTURING COMPANY

PRODUCTION AND DISTRIBUTION

HIGH QUALITY EMULSION PAINT, CEMENT PRIMER,
ENAMELS, TILE POLISH, TURPENTINE, THINNERS ETC...



MAKE YOUR
HOME
COLOURFUL



STAIN FREE INTERIORS
DUST FREE EXTERIORS
ODOUR FREE



www.flowerspaints.com

കേരളത്തിൽ ആദ്യമായി 160-ൽപരം ഉല്പന്നങ്ങൾ സ്വന്തം ഫാക്ടറിയിൽ നിർമ്മിച്ച് സ്വന്തം ഓട്ടോമറ്റുകളിലൂടെ വിതരണം ചെയ്യുന്ന ഏക സ്ഥാപനം

Distribution - Annet Marketing Company ✉ annetmarketing1@gmail.com ☎ +91 9188040153

INDEX

ABOUT US	1
FLOWERS EMULSION PAINTS	2-4
FLOWERS PRIMER PAINTS	5-6
FLOWERS WATER PROOFING	6
FLOWERS ENAMEL PAINTS	7
FLOWERS PAINTS PRODUCTS	8
OUR PROJECTS & AWARD	9

About Us



Proprietress Mrs. Sowmya Joshy, the Women Entrepreneur from Kerala launched Flowers Paints in 2016 as an MSME. With varying options of colour combinations we provide water resistant and decorative paints.

OUR MISSION

Our mission is to provide high-quality, eco-friendly paint products and exceptional customer service to help our customers transform their spaces into beautiful, inspiring environments.

OUR VISION

At our paint company, we have a clear vision of making the world a more colorful and beautiful place. We strive to provide high-quality paints and coatings that not only add aesthetic value to any surface but also protect and preserve it.

OUR VALUES

Our values are quality, innovation, sustainability, and customer satisfaction. We are committed to providing the best paints and coatings while prioritizing the well-being of our customers and the environment.

QUALITY ASSURANCE

Our paint products undergo rigorous testing and quality control measures to ensure they meet the highest standards of quality and performance. Shop with confidence knowing that we stand behind the quality of our paints with a satisfaction guarantee.



FOLLOW US NOW



www.flowerspaints.com



SOWMYA JOSHY

MANAGING DIRECTOR

EMULSION PAINTS

Flowers Silky Gloss

Flowers Paints Silky Gloss is a superior quality, water-resistant, modified silicone emulsion-based paint with excellent durability. It provides a highly breathable coating with extra ordinary UV and weather resistance for exterior application. It is highly washable and has very low dirt pick-up property. It has very good mechanical and abrasion resistance with excellent adhesion to various substrates. It contains anti-fungal and anti-bacterial additives.



Finishes - High Sheen



WATER BASED
COMPOSITION



EXTERIOR
INTERIOR

Available - 1L, 4L, 10L, 20L

USAGE



Flowers Orchid Shine

Flowers Paints Orchid Shine is an anti-algal weatherproof water-based, modified acrylic smooth emulsion with silicon additives that offers an anti-algal and high-performance exterior wall finish. Specially formulated high-performance color pigments and binder technology, which offer excellent resistance to ultraviolet radiation. This ensures brighter, cleaner shades that will not fade, ensuring your home continues to look beautiful over time.

Available - 1L, 4L, 10L, 20L

USAGE



WATER BASED
COMPOSITION



EXTERIOR
INTERIOR



Finishes - Sheen



- All emulsions available in White and Bright White.
- All colors are available with computer mixing.
- All Emulsion are available in Exterior & Interior.

EMULSION PAINTS

Flowers Blossom

Flowers Blossom is formulated by a special type of pure acrylic emulsion with high-quality pigments and microfine extender. It has excellent adhesion to the surface and has good penetrating properties and good coverage and finish. It has good flow and leveling properties with a smooth, matt decorative finish. It is an odorless emulsion paint for the interior. It has good re-coat ability and brush ability.



Finishes - Matt & Glossy



WATER BASED
COMPOSITION



INTERIOR

Available - 1L, 4L, 10L, 20L

USAGE



Flowers Weather Guard

Flowers Weather Guard is a superior emulsion, 100% pure acrylic emulsion based paint with superior quality pigments to meet the requirements of excellent weather & ultraviolet resistance for exterior applications. It can withstand high humidity and extreme climate. It is highly resistant to dusty environments. It has excellent anti chalking properties for years with excellent adhesion. It contains anti-fungal and anti-bacterial additives.

Available - 1L, 4L, 10L, 20L

USAGE



WATER BASED
COMPOSITION



EXTERIOR
INTERIOR



Finishes - Mild Sheen

- All emulsions available in White and Bright White.
- All colors are available with computer mixing.
- All Emulsion are available in Exterior & Interior.



EMULSION PAINTS

Flowers Daffodils

Flowers Paints Daffodils Exterior Emulsion is a superior quality acrylic co-polymer based, emulsion paint for interior/exterior surfaces. It is an economical grade emulsion of flowers paints. It is a water-based exterior wall finish with silicon additives suitable for dry to moderately humid climatic conditions. It provides an anti chalking smooth lustrous finish.



Finishes - Matt Finish



WATER BASED
COMPOSITION



EXTERIOR
INTERIOR

Quantity - 1L, 4L, 10L, 20L

USAGE



Etasa 2 in 1 Emulsion

Flowers paints ETASA 2 in 1 emulsion is a budget-friendly emulsion of Flowers second brand emulsion. It is a water-based emulsion paint that can be used for exterior and interior.

Quantity - 1L, 4L, 10L, 20L

USAGE



WATER BASED
COMPOSITION



EXTERIOR
INTERIOR



Finishes - Matt Finish



- All emulsions available in White and Bright White.
- Light Colours are available with computer mixing.
- All Emulsion are available in Exterior & Interior.

PRIMER PAINTS

Flowers Gold Primer

Flowers Paints Exterior Cement Primer is a high-quality special primer for masonry surfaces. It has excellent adhesion to the surface and good penetrating properties. It provides an excellent base for subsequent coats. It is a water-based exterior primer it contains more area coverage and hiding property with an extra 7% above quantity of Titanium rutile. It has alkali resistant and is of higher quality than cement primer from similar brands.



Finishes - Matt Finish



WATER BASED
COMPOSITION



EXTERIOR
INTERIOR

Quantity - 1L, 4L, 10L, 20L

USAGE



Flowers Silver Primer

Flowers Paints Exterior Cement Primer is a high-quality special primer for masonry surfaces. It has excellent adhesion to the surface and good penetrating properties. It provides an excellent base for subsequent coats. It is a water-based exterior primer with excellent alkali resistance.

Quantity - 1L, 4L, 10L, 20L

USAGE



WATER BASED
COMPOSITION



EXTERIOR
INTERIOR



Finishes - Matt Finish



PRIMER PAINTS

Etasa 2 in 1 Primer

Flowers paints ETASA 2 in-1 primer is a budget-friendly emulsion cement primer of Flowers second brand. It is a water-based primer that can be used for exterior and interior.



Finishes - Matt Finish



WATER BASED
COMPOSITION



EXTERIOR
INTERIOR

Quantity - 1L, 4L, 10L, 20L

USAGE



WATER PROOFING

Flowers Moist Guard



Flowers Moist Guard is used for Waterproofing wet areas like roofs and terraces. Rectify damp patches on parapets and sunshades. Waterproof treatment for exterior vertical walls. It contains acrylic polymers from the Dove brand for more elasticity and greater damp protection. It also reduces the room temperature.

Quantity - 1L, 4L, 10L, 20L

USAGE



WATER BASED
COMPOSITION



EXTERIOR
INTERIOR



ENAMEL PAINTS



Silky Touch Wood

Packing : 25L, 4L, 1L, 500ml
Available: Matt & Glossy



Flowers Melamine

Packing : 25L, 4L, 1L, 500ml
Available: Matt & Glossy



Sanding Sealer

Packing : 25L, 4L, 1L, 500ml



Wood Primer

Packing : 25L, 4L, 1L, 500ml



Synthetic Enamel

Packing : 25L, 4L, 1L, 500ml
Available: Matt, Satin, Glossy



Acrylic Tile Polish

Packing : 25L, 10L, 4L, 1L, 500ml
Available: Glossy



Flowers Chassis

Packing : 25L, 4L, 1L, 500ml
Available: Glossy



Dual Pack

Epoxy Primer & Top Coat

Packing : 25L, 4L, 1L,
Available: Glossy



Single Pack

Epoxy Primer & Top Coat

Packing : 25L, 4L, 1L, 500ml
Available: Glossy



Marine Epoxy

Packing : 25L, 4L, 1L,
Available: Glossy



Thinners

Packing : 25L, 4L, 1L, 500ml
FX 13, FX 58, FX 72,
Epoxy Thinner, PU Thinner,
Tile Polish Thinner etc

All colours of enamels are available in Glossy, Satin, Matt.
Oil Primer, Metal Primer, Zinc Chromate Primer etc.




FLOWERS PAINTS PRODUCTS

- WATER BASE PRIMER INTERIOR/EXTERIOR
- WATER BASE EMULSION INTERIOR/EXTERIOR AND IT'S ALL BASES
- WATER BASE PREMIUM EMULSION INTERIOR/EXTERIOR AND IT ALL BASES
- WATER BASE WEATHER GUARD EXTERIOR - MATT AND IT'S ALL BASES
- WATER BASE TILE GUARD (ALL COLOURS)
- WATER PROOFING
- FLOOR EPOXY COATINGS
- SOLVENT BASE PRIMERS
- SOLVENT BASE ENAMEL GLOSS / SATIN / MATT
- ALUMINIUM PAINT
- HAMMERTONE PAINT
- EPOXY PRIMERS - SINGLE/DUAL PACK
- EPOXY FINISH TOP COAT SINGLE/DUAL PACK
- POLYURETHANE PRIMER
- POLYURETHANE FINISH TOP COAT
- INDUSTRIAL PAINTS
- WOOD FINISH - NC SANDING SEALER / MELAMINE / TOUCHWOOD
- ALL TYPES OF THINNERS - FX-13, FX-58, FX-72, PU THINNER, EPOXY THINNER AND TURPEN ETC..
- ACRYLIC TILE COAT PAINTS - CLEAR AND VARIETY OF COLOURS
- ROOF COAT PAINTS - WATER BASE AND OIL BASE
- AUTO FINISH PAINTS
- GLASS PAINTS
- NC PAINTS
- ASPA PAINTS / PRIMER
- ACRYLIC WALL PUTTY


OUR FACTORY OUTLETS


Flowers Paints
Koratty
Chalakudy
+91 9188040152


Flowers Paints
Marottichode
Kalady
0484 - 2467377


Flowers Paints
Athani
Aluva
+91 9188040153


Flowers Paints
AM Road
Perumbavoor
0484 - 2593737

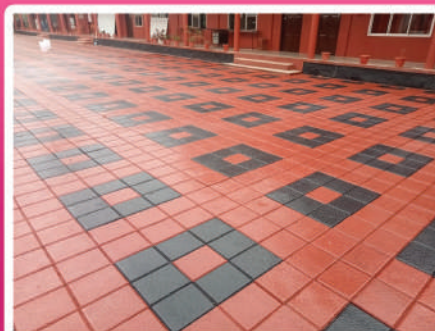

Flowers Paints
Nellikuzhy
Kothamangalam
0485 - 2957860


Flowers Paints
Kuruppampady
Perumbavoor
0484 - 2994182



QUICK CONTACT
+91 9497030150

OUR PROJECTS & AWARD



Brand Leadership Award 2023

“എന്നെന്തും
പറ്റുപറ്റത്തൻ
പറ്റിക്കുൾപാലെ”

SPC
FLOWERS[®]
PAINTS

KERALA'S NO.1 PAINT MANUFACTURING COMPANY
PRODUCTION AND DISTRIBUTION OF HIGH-QUALITY EXTERIOR AND INTERIOR
EMULSION, CEMENT PRIMER, ENAMEL PAINTS, THINNERS, TURPEN ETC...



Manufactured & Marketed by:
Sowmya Polymers & Chemicals Kanjikode West, Palakkad Dist. Kerala -678623
sowmyapolymerspkd@gmail.com

 **MORE DETAILS CALL US**
+91 9497030150, +91 8921886482  flowerspaints@gmail.com  www.flowerspaints.com